

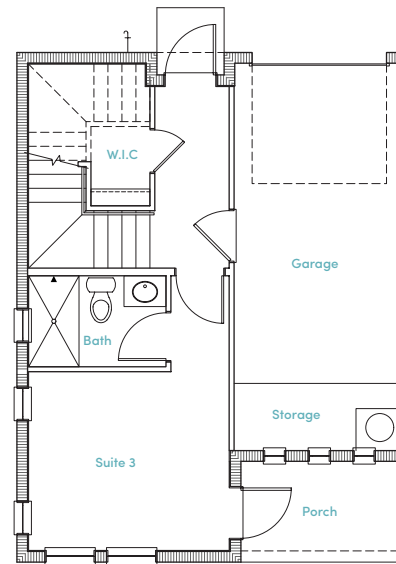
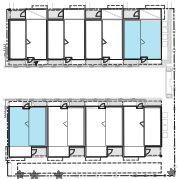
3 Bedroom / 3.5 Bath

Total Living (AC): 1697sf

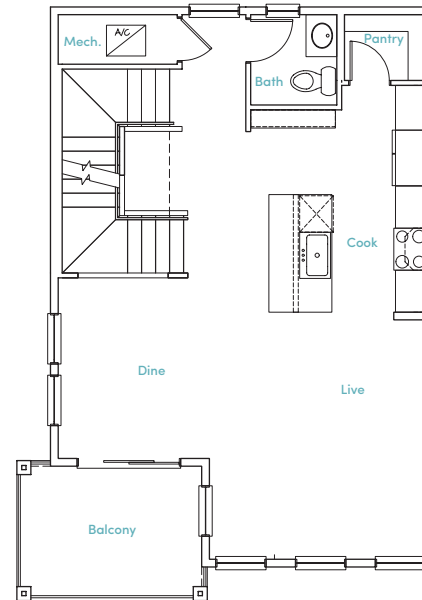
First Floor Living: 389sf
Second Floor Living: 637sf
Third Floor Living: 671sf

Total Living (Under Roof): 2089sf

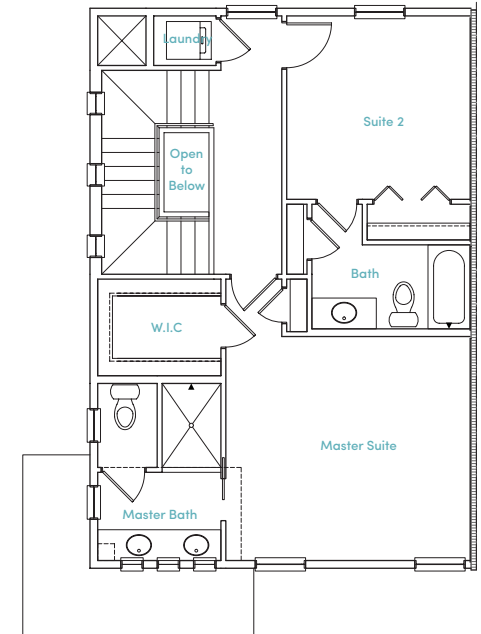
Garage: 245sf
Porch: 58sf
Balcony: 89sf



1st Floor



2nd Floor



3rd Floor

Tortola

Balcony Corner Units

Contact Sales Center at: 727.490.9308

All measurements are approximate and subject to normal construction variances and tolerances and may vary from floor to floor. Dimensions listed are based on measurements from exterior walls, and the listed square footage exceeds the usable floor area. Sponsor reserves the right to make changes in accordance with the terms of the offering plan. The complete offerings terms are in an offering plan available from Agent or Developer.

758 3rd Avenue South St.Petersburg, FL 33701